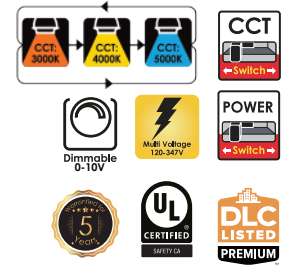
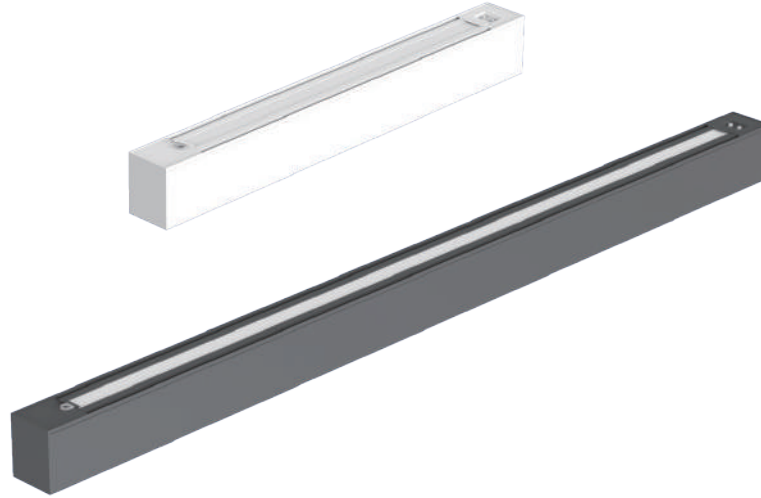


Project : _____
 Type : _____
 Drawn by : _____
 Catalogue No. : _____
 Date : _____



Specifications

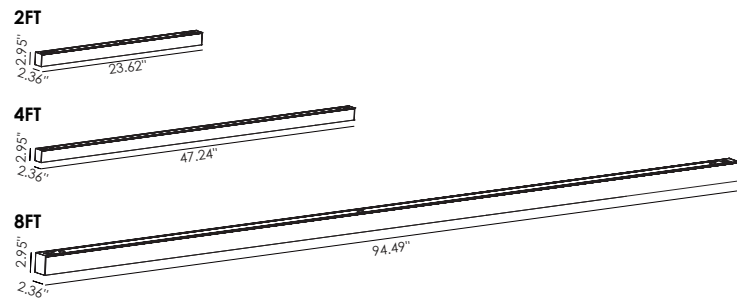
Model No.		VO-ALW15FT2-347-3WAY-P-W-D-X	VO-ALW15FT2-347-3WAY-P-B-D-X	VO-ALW50FT4-347-3WAY-P-W-D-X	VO-ALW50FT4-347-3WAY-P-B-D-X	VO-ALW100FT8-347-3WAY-P-W-D-X	VO-ALW100FT8-347-3WAY-P-W-D-X
General	Watts	10-13-15W	10-13-15W	30-40-50W	30-40-50W	60-80-100W	60-80-100W
	HID Equivalent	Min.26W, Max. 40W	Min.26W, Max. 40W	Min.78W, Max. 130W	Min.78W, Max. 130W	2xMin.78W, Max. 130W	2xMin.78W, Max. 130W
	Lumen	1300-1690-1950LM	1300-1690-1950LM	3900-5200-6500LM	3900-5200-6500LM	7800-10400-13000LM	7800-10400-13000LM
	Efficiency	130LM/W	130LM/W	130LM/W	130LM/W	130LM/W	130LM/W
	CCT	3000/4000/5000 ADJ	3000/4000/5000 ADJ	3000/4000/5000 ADJ	3000/4000/5000 ADJ	3000/4000/5000 ADJ	3000/4000/5000 ADJ
	Volts	AC120-347V	AC120-347V	AC120-347V	AC120-347V	AC120-347V	AC120-347V
	CRI	>80	>80	>80	>80	>80	>80
	Beam Angel	120degree	120degree	120degree	120degree	120degree	120degree
	Hours Rated	50000 hours	50000 hours	50000 hours	50000 hours	50000 hours	50000 hours
	Installation ways	Pendant, wall mounted, surface mounted	Pendant, wall mounted, surface mounted	Pendant, wall mounted, surface mounted	Pendant, wall mounted, surface mounted	Pendant, wall mounted, surface mounted	Pendant, wall mounted, surface mounted
IP rating	IP20	IP20	IP20	IP20	IP20	IP20	
Finish	White, RAL9016	Black, RAL9011	White, RAL9016	Black, RAL9011	White, RAL9016	Black, RAL9011	
Linkable	Yes Max. linkable qty: 48pcs	Yes Max. linkable qty: 48pcs	Yes Max. linkable qty: 16pcs	Yes Max. linkable qty: 16pcs	Yes Max. linkable qty: 8pcs	Yes Max. linkable qty: 8pcs	
Electrical	Operating Frequency	50-60Hz	50-60Hz	50-60Hz	50-60Hz	50-60Hz	50-60Hz
	Power Factor	>0.9	>0.9	>0.9	>0.9	>0.9	>0.9
	Flicker percentage	<5%	<5%	<5%	<5%	<5%	<5%
	Surge Protection	L/N-1KV	L/N-1KV	L/N-1KV	L/N-1KV	L/N-1KV	L/N-1KV
	Operating Temperature	-20°C TO 40°C	-20°C TO 40°C	-20°C TO 40°C	-20°C TO 40°C	-20°C TO 40°C	-20°C TO 40°C
Physical	Dimension	23.62X2.95X2.36 in	23.62X2.95X2.36 in	47.24X2.95X2.36 in	47.24X2.95X2.36 in	94.49X2.95X2.36 in	94.49X2.95X2.36 in
	Housing	Aluminum	Aluminum	Aluminum	Aluminum	Aluminum	Aluminum
	Housing finish color	White, RAL9016	Black, RAL9011	White, RAL9016	Black, RAL9011	White, RAL9016	Black, RAL9011
	Diffuser material	PC	PC	PC	PC	PC	PC
	Weight	3.09lb	3.09lb	5.07lb	5.07lb	9.7lb	9.7lb
Additional Information	MAX. remote LOAD	No	No	No	No	No	No
	Warranty	5 years	5 years	5 years	5 years	5 years	5 years
Compliance	Safety Listing	CUL-Listed	CUL-Listed	CUL-Listed	CUL-Listed	CUL-Listed	CUL-Listed
	Location Rating	Damp	Damp	Damp	Damp	Damp	Damp
	Energy Star	No	No	No	No	No	No
	DLC Approved	Yes,DLC5.1 Premium	Yes,DLC5.1 Premium	Yes,DLC5.1 Premium	Yes,DLC5.1 Premium	Yes,DLC5.1 Premium	Yes,DLC5.1 Premium
DLC ID	S-YOQLBN	S-YOQLBN	S-OGYPIB	S-OGYPIB	S-EZFXHK	S-EZFXHK	

Features & Specifications

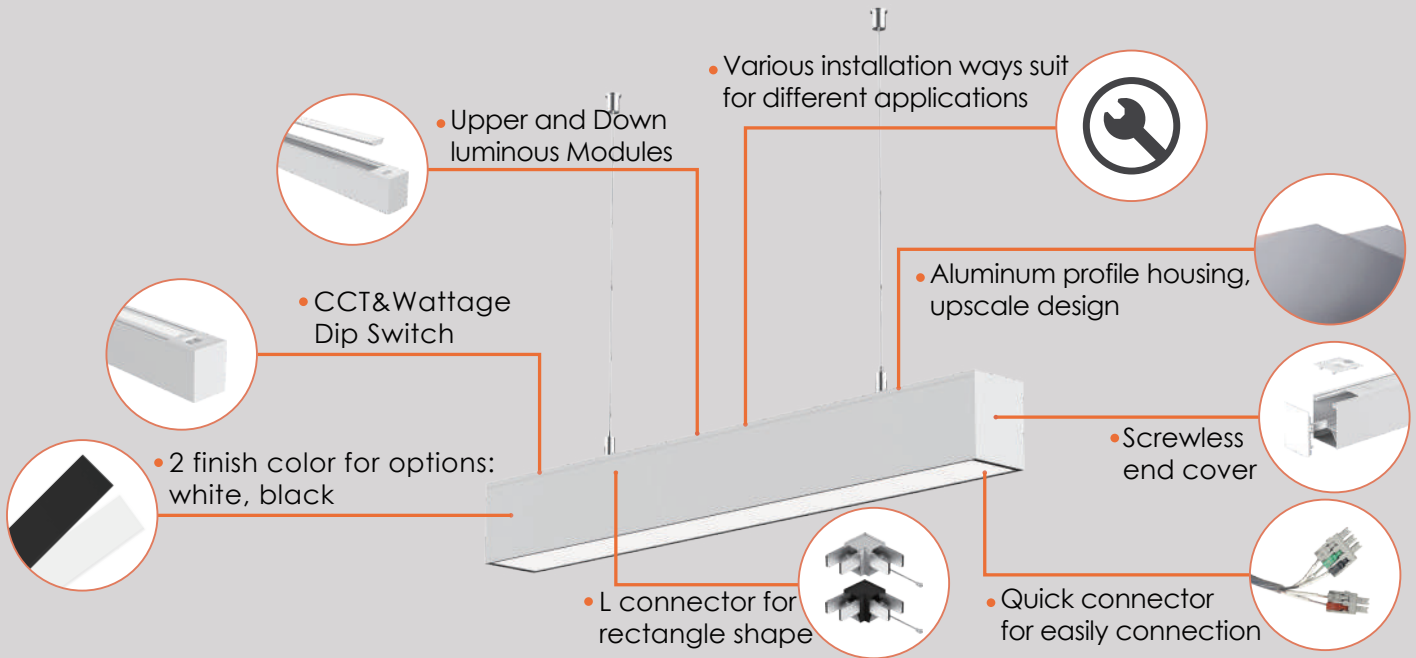
Construction	<ul style="list-style-type: none"> Aluminum housing, low profile, upscale design 3 CCTs and 3 Powers Selectable provides more options on site and save SKU in warehousing Screwless end cap and buckle joint ensure tool-free connecting Indirect/direct lighting mode for options Various different installation accessories for different application: pendant, wall mounted, surface mounted Various different accessories for different shape: I, L
	<ul style="list-style-type: none"> Pendant Optional accessories for different installation: wall mounted, surface mounted
Mounting	<ul style="list-style-type: none"> Available in 3000K/4000/5000K selectable color temperature 80+ CRI, SDCM<5 Electrical ratings: 120-347 V Estimated life of over 100,000 hours to L70 0-10V dimming driver Flicker percentage<5%, meet IEEE standard Operating temperature: -20°C to 40°C (-4°F to 104°F)
	<ul style="list-style-type: none"> cULus certified for Damp locations DLC5.1 Premium
Performance Data	
Compliances	

Dimensions & Weights

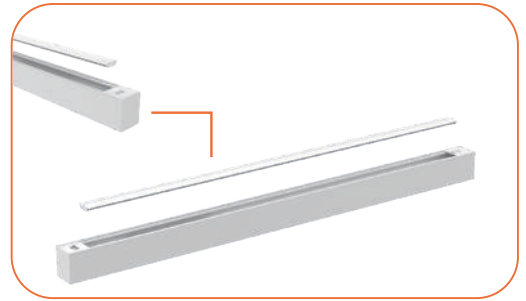
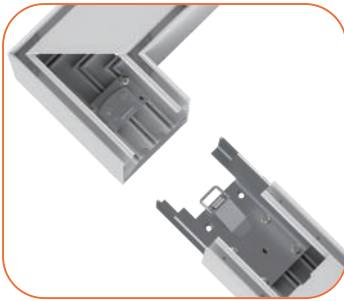
Model	2FT	4FT	8FT
Size in. (mm)	23.62X2.95X2.36 in (600X75X60)	47.24X2.95X2.36 in (1200X75X60)	94.49X2.95X2.36 in (2400X75X60)
Net weight (lbs)	3.09lb	5.07lb	9.7lb
Package	1pc/box 6pcs/ctn	1pc/box 6pcs/ctn	1pc/box 4pcs/ctn



Product Details

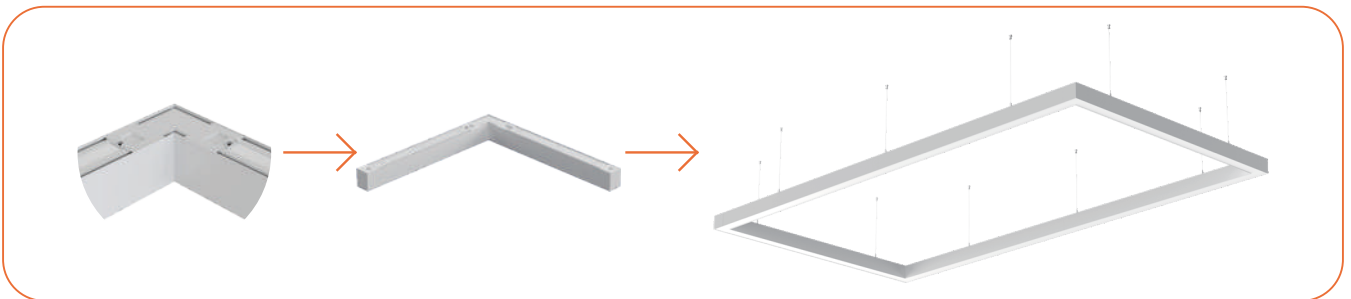


Connections



I type, countinuous run
Max. linkable: 8FT-8PCS,4FT-16PCS,2FT-48PCS

Upper luminous module,
up and down light

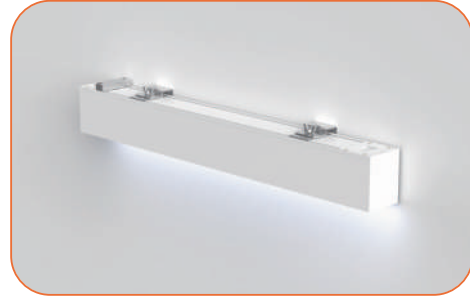


L connector, rectangle shape

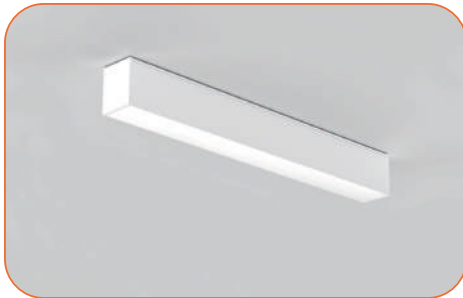
Installations



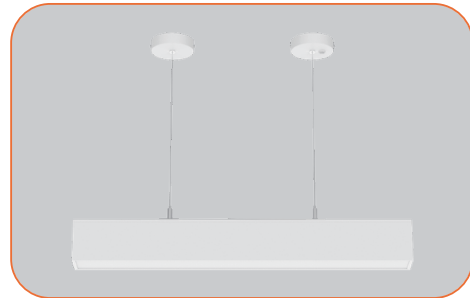
Suspension



Wall mounted



Surface mounted



Suspension with Canopy

Compatible Dimmers

Brand	Model
LUTRON	DSTV-Diva

Dimming range : 10%-100%

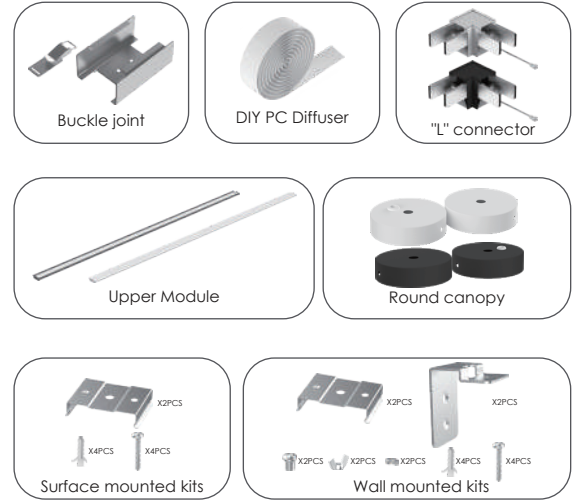
This table shows dimmers that have been tested and have demonstrated proper operation under normal conditions. Each installation being unique, various factors such as load, common neutrals or other electrical products on the circuit can, in certain instances, cause variance in system performance.

Read and comply to the dimmer installation instructions. Some dimmers may require more than one product for stable operation.

recommends to use dimmers designed to work with LED products. Older dimmers designed for incandescent products may cause erratic operation.

Accessories (Order Separately)

Order Code	Compatible With
Buckle joint for I type(LI-JI-0000-0)	2FT, 4FT, 8FT
DIY PC Diffuser for "I" type,(LI-J-Z001)	2FT, 4FT, 8FT
Surface mounted kits(LI-J-X001)	2FT, 4FT, 8FT
Wall mounted kits(LI-J-B001)	2FT, 4FT, 8FT
Upper module for 2FT, 3CCT(LI-J0600-PPCF-W)	2FT, white
Upper module for 2FT, 3CCT(LI-J0600-PPCF-B)	2FT, black
Upper module for 2FT, 3CCT(LI-J1200-PPCF-W)	4FT, white
Upper module for 2FT, 3CCT(LI-J1200-PPCF-B)	4FT, black
Upper module for 2FT, 3CCT(LI-J2400-PPCF-W)	8FT, white
Upper module for 2FT, 3CCT(LI-J2400-PPCF-B)	8FT, black
"L" connector for L type-3CCT(LI-JL-PPCN-W-004)	2FT, 4FT, 8FT, white
"L" connector for L type-3CCT(LI-JL-PPCN-B-004)	2FT, 4FT, 8FT, black
Round canopy, Φ 4" (LI-J-R120-001-W)	2FT, 4FT, 8FT, white
Round canopy, Φ 4" (LI-J-R120-002-B)	2FT, 4FT, 8FT, black



Lumen Details

Model No.:	Watts (W)	3000K		4000K		5000K	
		Lumen Output (LM)	Efficiency (LM/W)	Lumen Output (LM)	Efficiency (LM/W)	Lumen Output (LM)	Efficiency (LM/W)
VO-ALW15FT2-347-3WAY-P-W-D-X	10W	1302.4	130	1324.0	132	1311.2	131
	13W	1795.1	131	1806.0	132	1809.0	132
	15W	2010.4	131	2033.9	132	2033.9	132
VO-ALW15FT2-347-3WAY-P-B-D-X	10W	1263.3	130	1284.3	130	1271.9	130
	13W	1741.2	128	1751.8	128	1754.7	128
	15W	1950.1	128	1972.9	128	1972.9	128
VO-ALW50FT4-347-3WAY-P-W-D-X	30W	3848.3	131	3896.7	133	3896.7	133
	40W	5005.8	133	5022.5	134	5050.3	134
	50W	6044.5	130	6106.5	131	6215.5	133
VO-ALW50FT4-347-3WAY-P-B-D-X	30W	3732.9	130	3779.8	130	3779.8	130
	40W	4855.6	128	4871.8	128	4898.8	128
	50W	5863.2	128	5923.3	128	6029.0	128
VO-ALW100FT8-347-3WAY-P-W-D-X	60W	8103.4	132	8163.0	133	8132.8	132
	80W	10634.0	132	10759.0	134	10673.0	132
	100W	13250.0	132	13376.0	133	13356.0	133
VO-ALW100FT8-347-3WAY-P-B-D-X	60W	7860.3	130	7918.1	130	7888.8	130
	80W	10315.0	128	10436.2	128	10352.8	128
	100W	12852.5	128	12974.7	128	12955.3	128

